



111 Blight Street Renown Park SA

3  1  1 

What once felt like a home waiting for direction now lands as a beautiful resolved family home thanks to a carefully considered transformation that pays due respect the character-rich cues that made it worth saving in the first place.

Behind its charming return verandah, picket fence and symmetrical bungalow facade unfolds a home that still honours its original 1930s soul. Think Baltic pine floors, leadlight, soaring ceilings, open fireplaces and rich timber detailing.

Its original section reveals three generous bedrooms, a formal lounge and a beautifully refreshed bathroom with clawfoot bath, heritage-inspired tiling and lashings of

Type : House
Price : Best Offer By Monday 1st June @ 7:00PM
Land Size : 472 sqm
View : <https://www.crawfordoran.com.au/8703015>

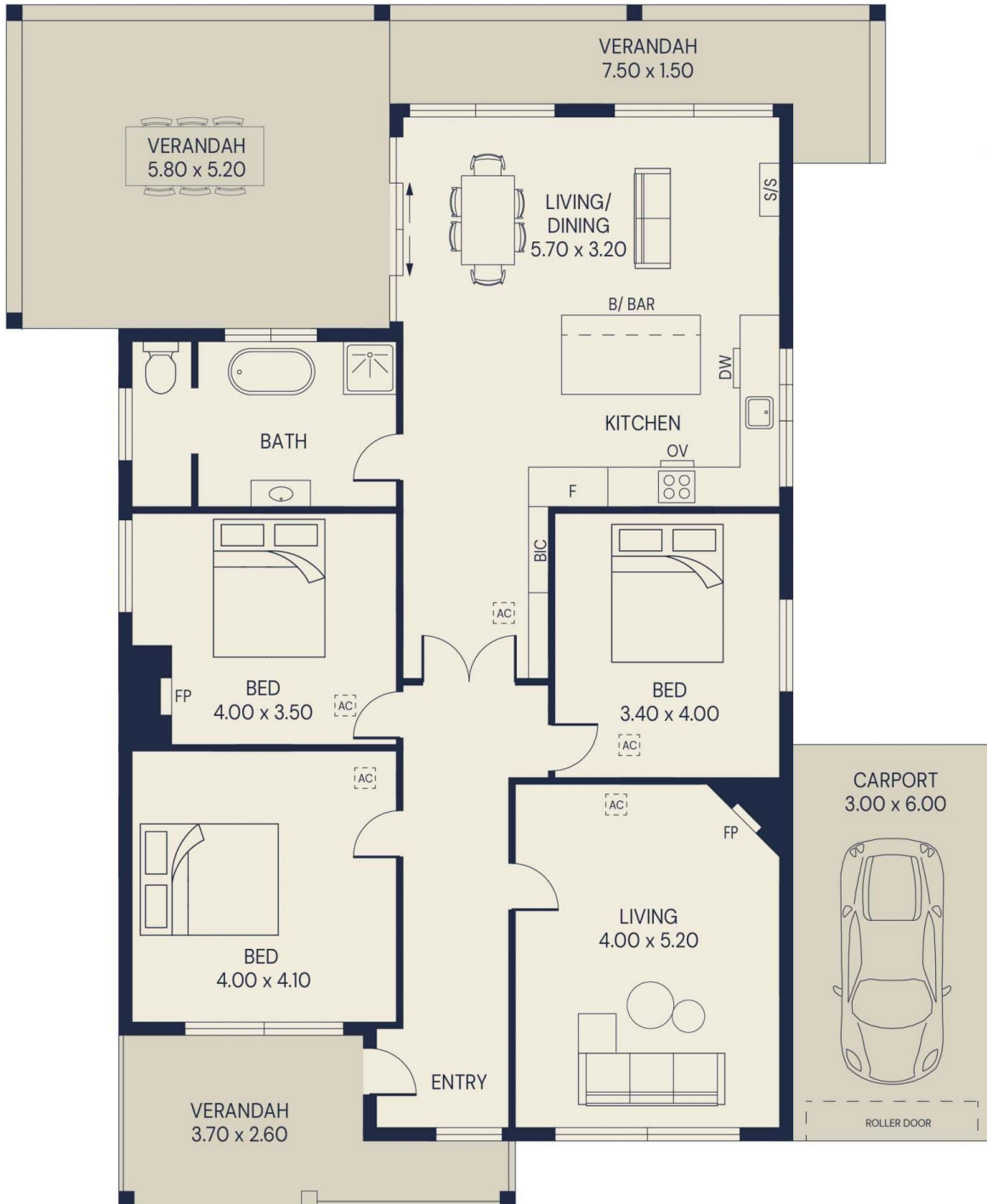


Davis Pickering
08 8124 8930



Thomas Crawford
08 8124 8930

[For full version visit the website](https://www.crawfordoran.com.au)



Living area	143sqm
Carport	18sqm
Verandah	54sqm
Total area	215sqm

111 BLIGHT STREET, RENOWN PARK

