



**15 Gladstone Road Mile End SA**

2  1  1 

Where edgy Mile End can't nudge much closer to the city's parklands stands this C.1910 stone etched character villa with the strong, working bones that make it eminently livable today and primed for a reimagining when you feel like it.

You'll feel the charm of its timber floors, high ceilings, ornate fireplaces and light grabbing sash windows well before you fully discover its two big bedrooms, lounge room and eat-in kitchen.

The house is comfortable, rentable and immediately useful, but its 496sqm approx. holding also leaves enough rear depth to dream bigger.

**Type** : House  
**Price** : Auction  
**Building Size** : 126 sqm  
**Land Size** : 496 sqm  
**View** : <https://www.crawfordoran.com.au/87030>  
 12

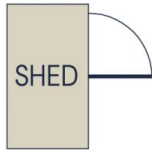


**Vincent Doran**  
08 8124 8930

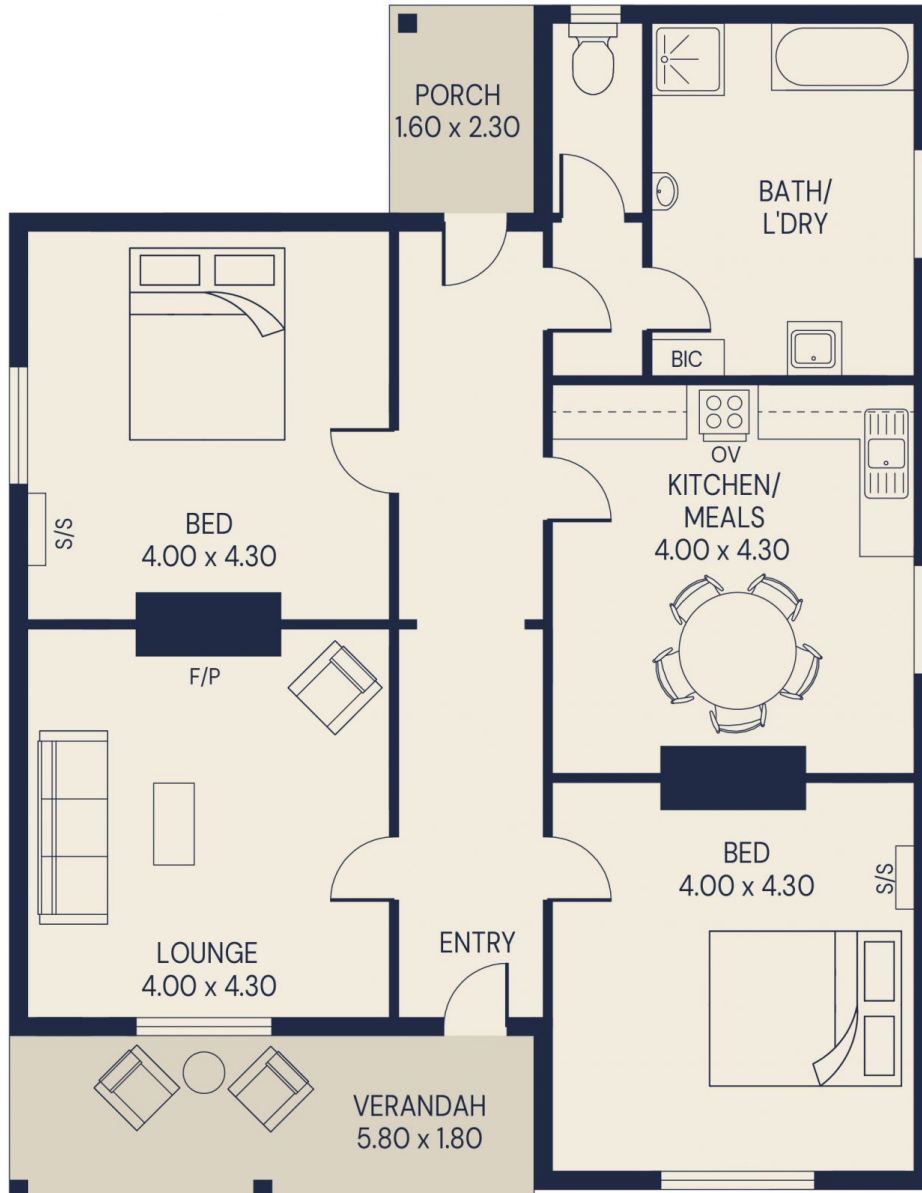


**Thomas Crawford**  
08 8124 8930

[For full version visit the website](https://www.crawfordoran.com.au)



(NOT IN POSITION)



|             |        |
|-------------|--------|
| Living area | 110sqm |
| Verandah    | 10sqm  |
| Porch       | 4sqm   |
| Shed        | 1sqm   |
| Total area  | 126sqm |

15 GLADSTONE ROAD, MILE END



Scale in metres. Indicative only. All information contained herein is obtained from source we believe to be accurate. We cannot guarantee its accuracy. Interested persons should make and rely on their own enquiries.