



2 Ellen Street Croydon SA

4  1  3 

Among Croydon's mix of contemporary builds and century old character homes sits this solidly constructed residence, occupying the sweet spot between old and new. Offering exciting scope to renovate, extend or reimagine entirely (STPC), this home is ideally positioned just a five minute stroll from Queen Street.

Solid double brick construction and unapologetically honest and quietly nostalgic, this four-bedroom home offers strong bones, generous proportions and immediately livable - ready to enjoy, lease, renovate or hold as Croydon continues its steady rise.

Inside, the home is immediately welcoming and well cared for, with charmingly nostalgic details including a timber

[For full version visit the website](https://www.crawfordoran.com.au/87014)

Type : House
Price : \$900,000 | Auction
Building Size : 212 sqm
Land Size : 445 sqm
View : <https://www.crawfordoran.com.au/87014>
 11



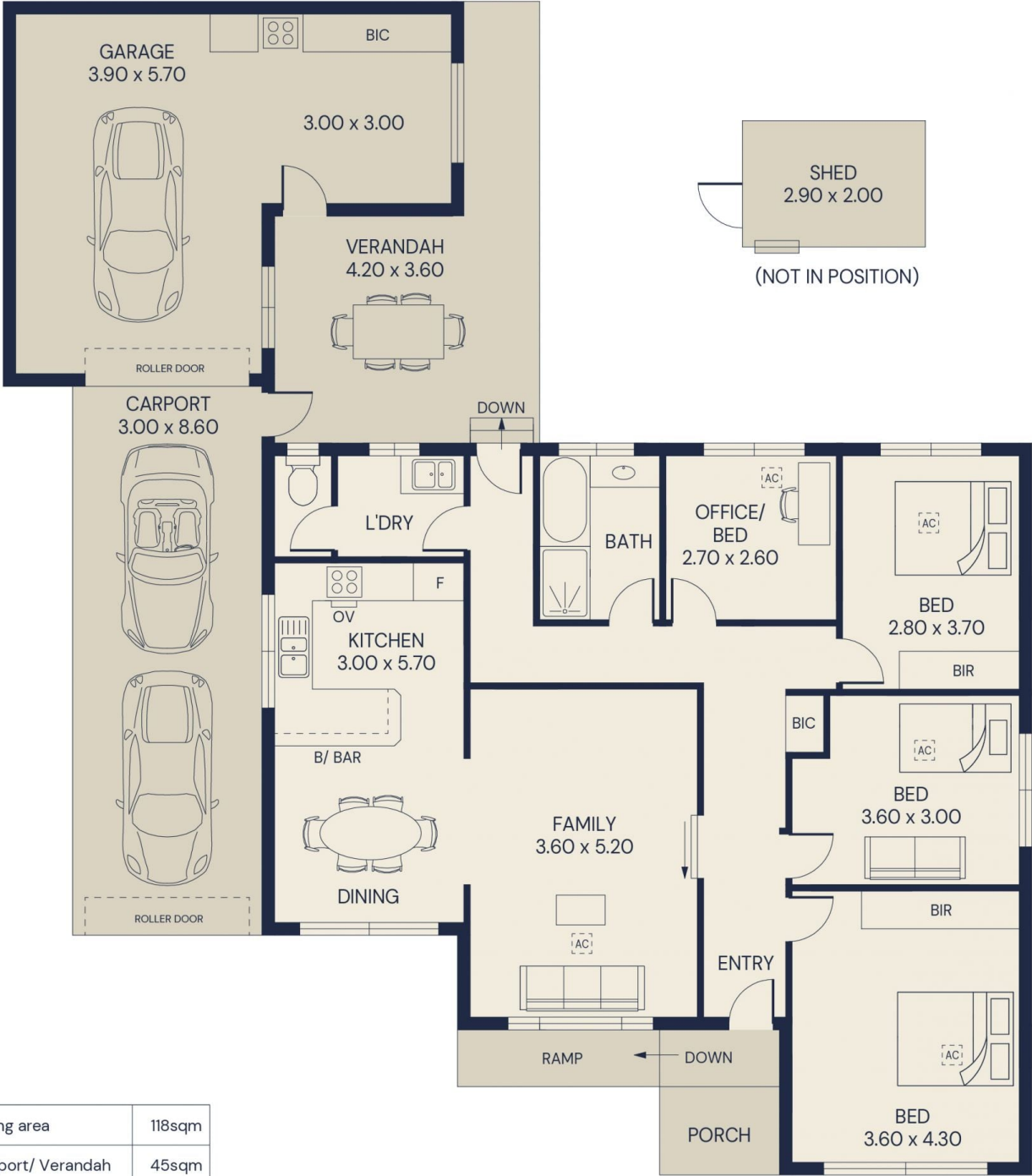
Thomas Crawford
08 8124 8930



Jim De Gregorio
08 8124 8930

RWT RWT

(NOT IN POSITION)



Living area	118sqm
Carport/ Verandah	45sqm
Garage	36sqm
Porch	7sqm
Shed	6sqm
Total area	212sqm

2 ELLEN STREET, CROYDON



Scale in metres. Indicative only. All information contained herein is obtained from source we believe to be accurate. We cannot guarantee its accuracy. Interested persons should make and rely on their own enquiries.