



19A Wood Avenue Brompton SA

4  2  1 

With three bedrooms, study, vast open-plan living and an effortless spill to its quaint rear garden, there's so much more to this cottage-style single-fronted home than meets first eye, all beautifully placed within walking distance of Queen Street's cafes and Bowden's Plant precinct.

What it lacks in width, it makes up for with an elongated footprint that turns its centrally placed, ensuited main bedroom towards a private north-facing courtyard; your retreat in a home that brings everyone together at its sunny rear.

With stone benchtops, stainless-steel appliances, dishwasher and plenty of storage, the fully equipped kitchen is both unobtrusive and supremely practical at the

[For full version visit the website](https://www.crawfordoran.com.au)

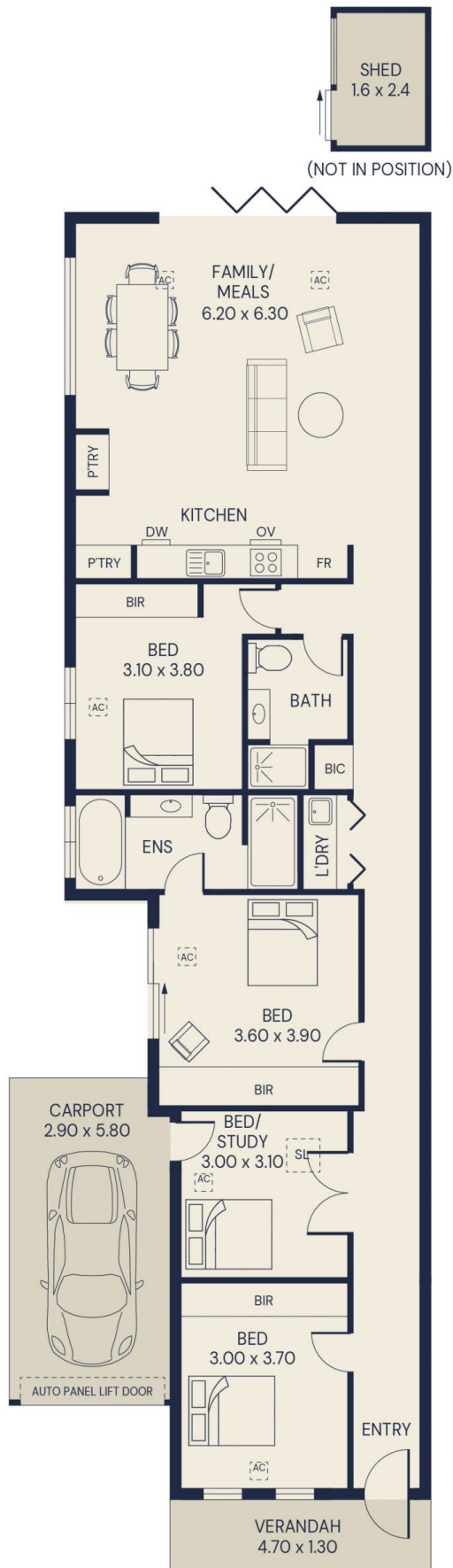
Type : House
Price : Auction
Building Size : 161 sqm
Land Size : 267 sqm
View : <https://www.crawfordoran.com.au/8697552>



Thomas Crawford
08 8124 8930



Ali Hussain
08 8124 8930



Living area	134sqm
Carport	17sqm
Verandah	6sqm
Shed	4sqm
Total area	161sqm

19A WOOD AVENUE, BROMPTON

