



**13 Capri Close West Lakes SA**

4  3  2 

Tucked into an exclusive Delfin Island cul-de-sac, this dual-level home turns its back on life's stresses and gives itself to the water, opening at the rear to direct lake frontage, lawn-to-water living and elevated balcony views that make the outlook part of every moment.

Beautifully kept by its long-time owners, this four-bedroom home carries a classic sense of grace, pairing light-filled interiors, soft neutral tones and elegant proportions with the bonus of scope to add a sharper contemporary stamp when the mood strikes.

On the lower level, lounge, dining, kitchen and family zones connect without breaking stride, all of them in constant conversation with the water thanks to vast colonial

[For full version visit the website](https://www.crawfordoran.com.au/86975)

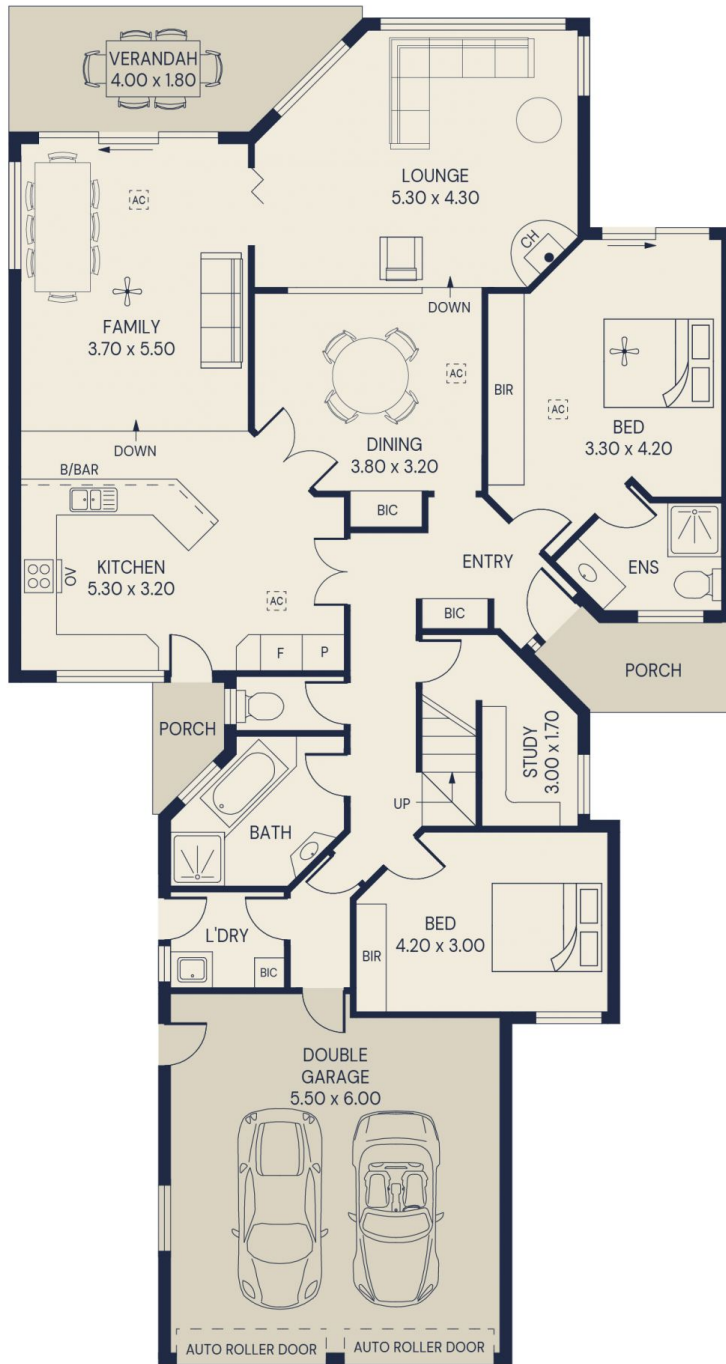
**Type** : House  
**Price** : Auction  
**Building Size** : 283 sqm  
**Land Size** : 462 sqm  
**View** : <https://www.crawfordoran.com.au/86975>  
 12



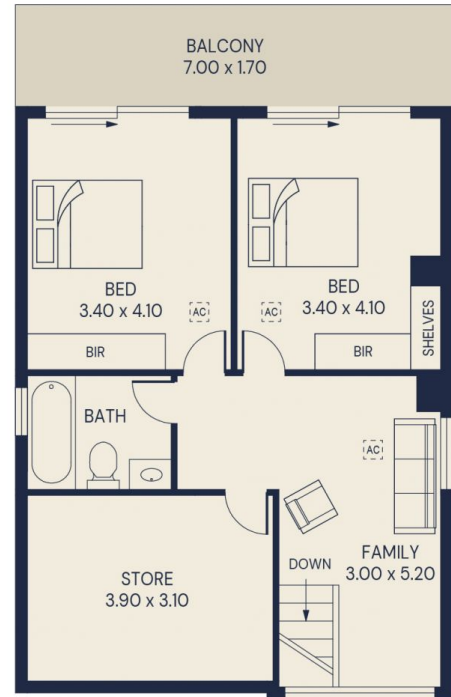
**Davis Pickering**  
08 8124 8930



**Vincent Doran**  
08 8124 8930



GROUND FLOOR



UPPER FLOOR

Living area	224sqm
Garage	33sqm
Verandah	7sqm
Porch	7sqm
Balcony	12sqm
Total area	283sqm

13 CAPRI CLOSE, WEST LAKES



Scale in metres. Indicative only. All information contained herein is obtained from source we believe to be accurate. We cannot guarantee its accuracy. Interested persons should make and rely on their own enquiries.