






**41 Francis Ridley Circuit Brompton SA**

3  2  2 

In a serene, leafy cul-de-sac that makes the city feel two worlds away stands a beautifully resolved three-bedroom home that puts the CBD and the buzz of Bowden on its doorstep.

Designed to wrap its north-facing, covered courtyard like a warm hug, this stone-fronted home hits the sweet spot where spacious, peaceful and easy intersect.

Lining all three bedrooms on the southern side, including an ensuited main, this move-in-ready home follows a wonderfully simple, deceptively spacious plan with multiple living zones.

There's a lounge zone with study nook, a larger family zone

[For full version visit the website](https://www.crawfordoran.com.au/8688841)

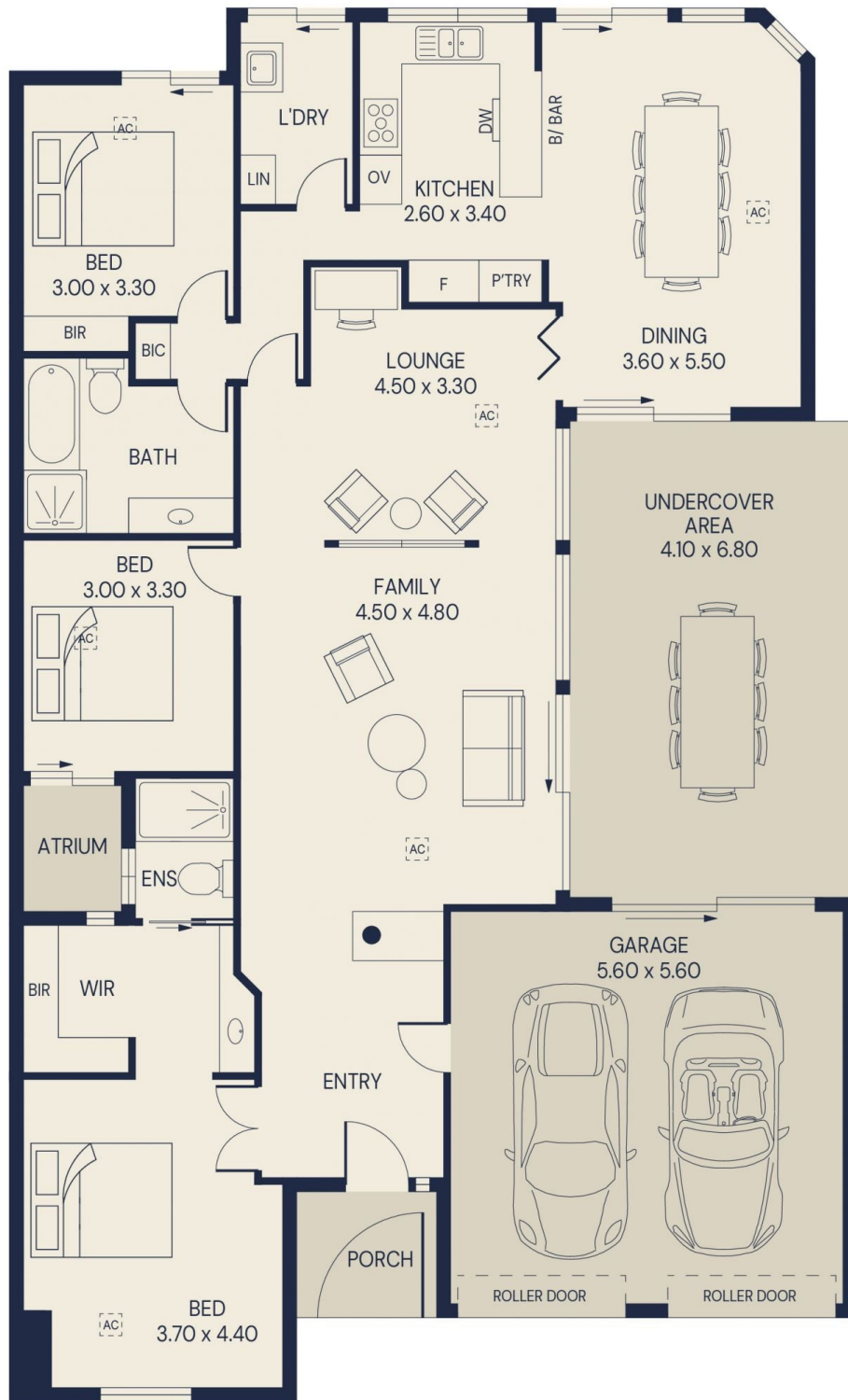
**Type** : House  
**Price** : Auction  
**Building Size** : 221 sqm  
**Land Size** : 312 sqm  
**View** : <https://www.crawfordoran.com.au/8688841>



**Cassandra Yeates**  
08 8124 8930



**Thomas Crawford**  
08 8124 8930



Living area	158sqm
Garage	31sqm
Undercover Area	28sqm
Porch	4sqm
Total area	221sqm

41 FRANCIS RIDLEY CIRCUIT, BROMPTON

