

13/76 Wood Avenue Ridleyton SA

2  1  1 

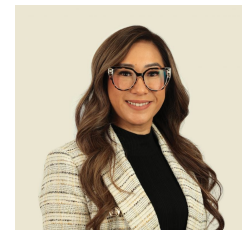
Introducing a sleek and contemporary two-story townhouse at 13/76 Wood Avenue, nestled in the popular inner-city suburb of Ridleyton, mere minutes from the vibrant Adelaide CBD. This home is perfect for first-time homebuyers, young families, or savvy investors seeking a quality lifestyle in one of Adelaide's most sought-after neighbourhoods.

Showcasing modern design and low-maintenance living, the property boasts an immaculate interior and an ultra-modern spacious open-plan living area with extra high ceilings and downlighting. The gourmet kitchen is a delight for any avid cook, featuring gas cooking, stone benchtops, a large island, ample storage, and stainless-steel appliances, including dishwasher.

Type : House
Price : \$ 680,000
Land Size : 103 sqm
View : <https://www.crawfordoran.com.au/8153270>

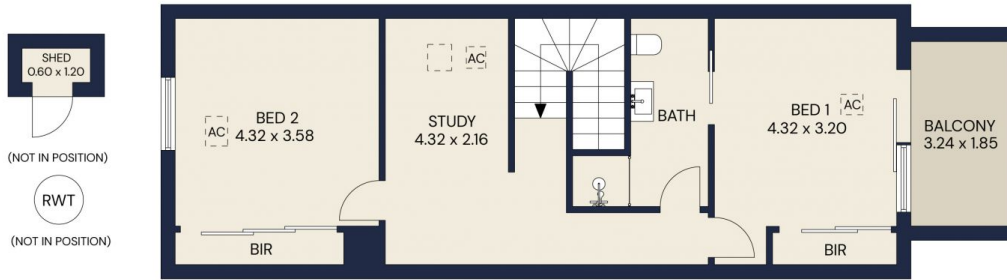


Thomas Crawford
08 8124 8930

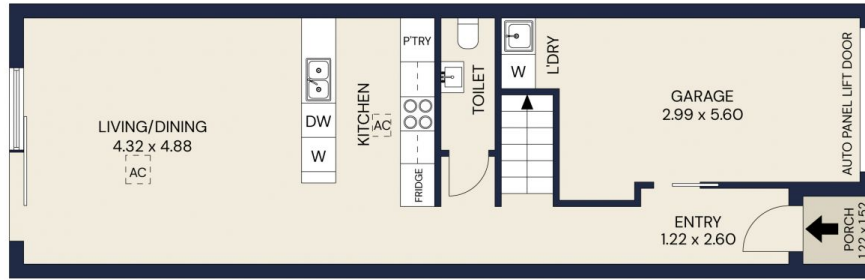


Jennifer Luong
08 8124 8930

[For full version visit the website](https://www.crawfordoran.com.au)



1ST FL



GROUND FL

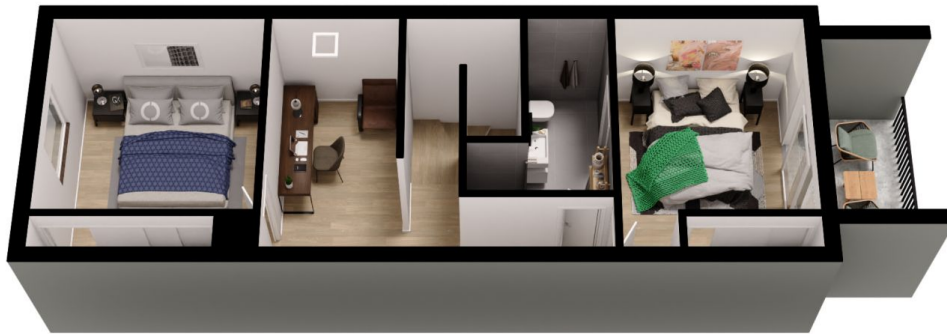
Living area	110sqm
Porch	1sqm
Shed	2sqm
Garage	21sqm
Total area	134sqm



CRAWFORD JORAN

13/76 WOOD AVENUE, RIDLEYTON

Scale in metres. Indicative only. All information contained herein is obtained from source we believe to be accurate. We cannot guarantee its accuracy. Interested persons should make and rely on their own enquiries



1ST FL



GROUND FL



CRAWFORD JORAN

13/76 WOOD AVENUE, RIDLEYTON

The floor plan is not to scale, measurements are indicative and in metres. All features included in this 3D plan are for inspiration purposes only. This is not an exact replica of the property or the position of exterior elements. Plans should not be relied on. Interested parties should make and rely on their own enquiries.